



## **Olympus RAW File Import Plug-in for Adobe Photoshop**

### **Installation Instructions**

#### **Overview**

The **Olympus® RAW File Import Plug-in** adds to Adobe® Photoshop® software the ability to import RAW data files (extension .orf) captured with compatible Olympus digital cameras. After the data has been imported, the plug-in will also enable RAW file development.

#### **About the Plug-in**

There are actually three different plug-ins, and the one that is appropriate for you depends upon which operating system and which version of Adobe Photoshop software you use. You will find the most recently updated versions of each plug-in on the Olympus America web site. Use the links below to download the version of the plug-in suited to your needs.

If you use Windows 98, Windows 98 SE, Windows Me, Windows 2000 Professional, or Windows XP, with Adobe Photoshop version 6.0 (or later) click [here](#).

If you use Mac OS 9.1-9.2 or Mac OS X 10.1.3 (or later) with Adobe Photoshop version 6.0, click [here](#).

If you use Mac OS 9.1-9.2 or Mac OS X 10.1.3 (or later) with Adobe Photoshop version 7.0 or Adobe Photoshop CS, click [here](#).

#### **System Requirements:**

In addition to the operating system and Adobe Photoshop application, you will need 64MB of RAM memory and 200MB or more of hard disk space.

#### **Compatible Models:**

The Olympus RAW File Import Plug-in for Adobe Photoshop is compatible with the following Olympus digital cameras:

C-5050 Zoom	C-7070 Wide Zoom	E-20	EVOLT E-500
C-5060 Wide Zoom	C-8080 Wide Zoom	E-20N	SP-350
C-70 Zoom	E-1	E-20P	SP-500 UZ
C-7000 Zoom	E-10	EVOLT E-300	

#### **Installation Instructions**

To install the Olympus RAW File Import Plug-in, do the following:

1. Exit the Adobe Photoshop software.
2. Download the appropriate file for your operating environment from the Olympus America web site. Use the links provided in the Overview.

3. Double-click on the file to extract its contents. Specify a folder and write it down. By default, the file will be extracted to the desktop.
4. Browse your computer, and navigate to the **Import-Export** folder for the Adobe Photoshop application. The location of this folder will vary with operating system and Photoshop version; however, you will find it within the **Plug-Ins** folder for the installed Photoshop application. Examples follow:

For Windows systems:

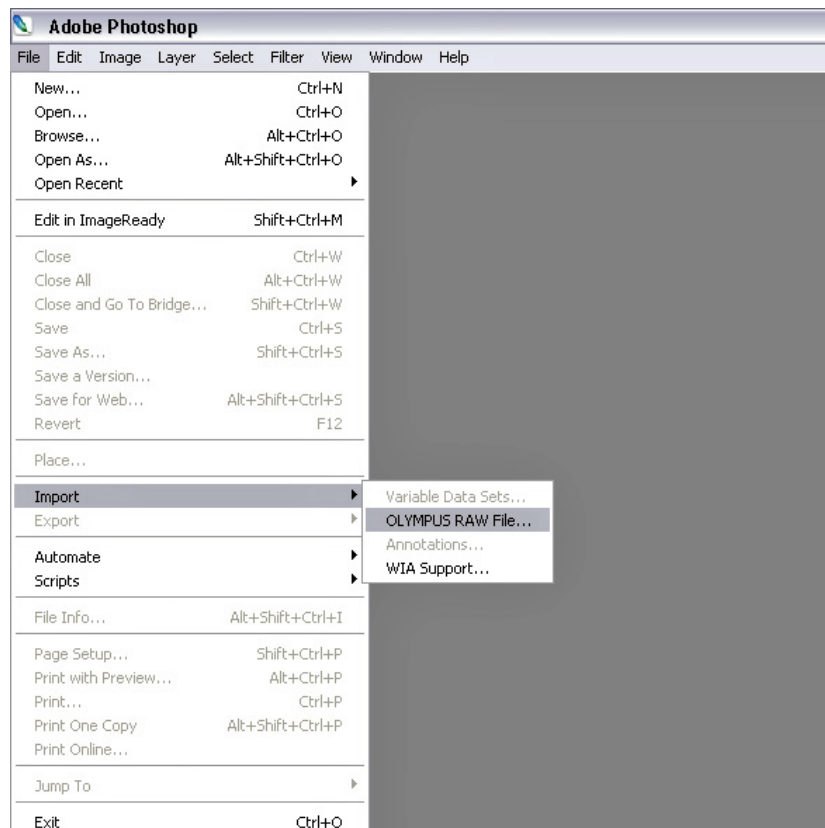
C:\Program Files\Adobe\Adobe Photoshop CS2\Plug-Ins\Import-Export

For Macintosh

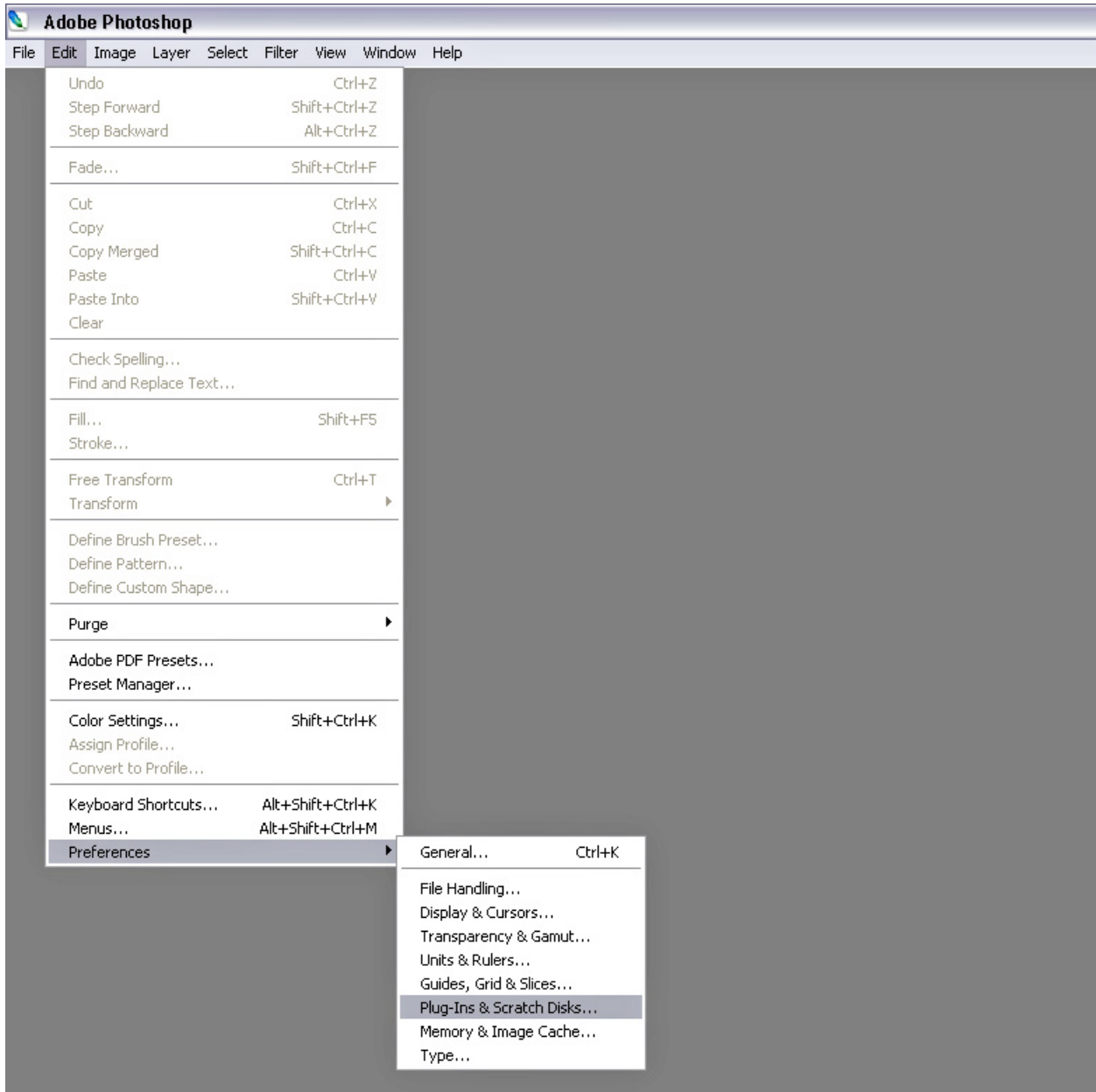
Local Disk\Applications\Adobe Photoshop CS\Plug-Ins\Import-Export

5. Move or Copy the **ORFImport.8ba** file from the location where you extracted it to the **Import-Export** folder for your Adobe Photoshop application.
6. Launch the Adobe Photoshop application.

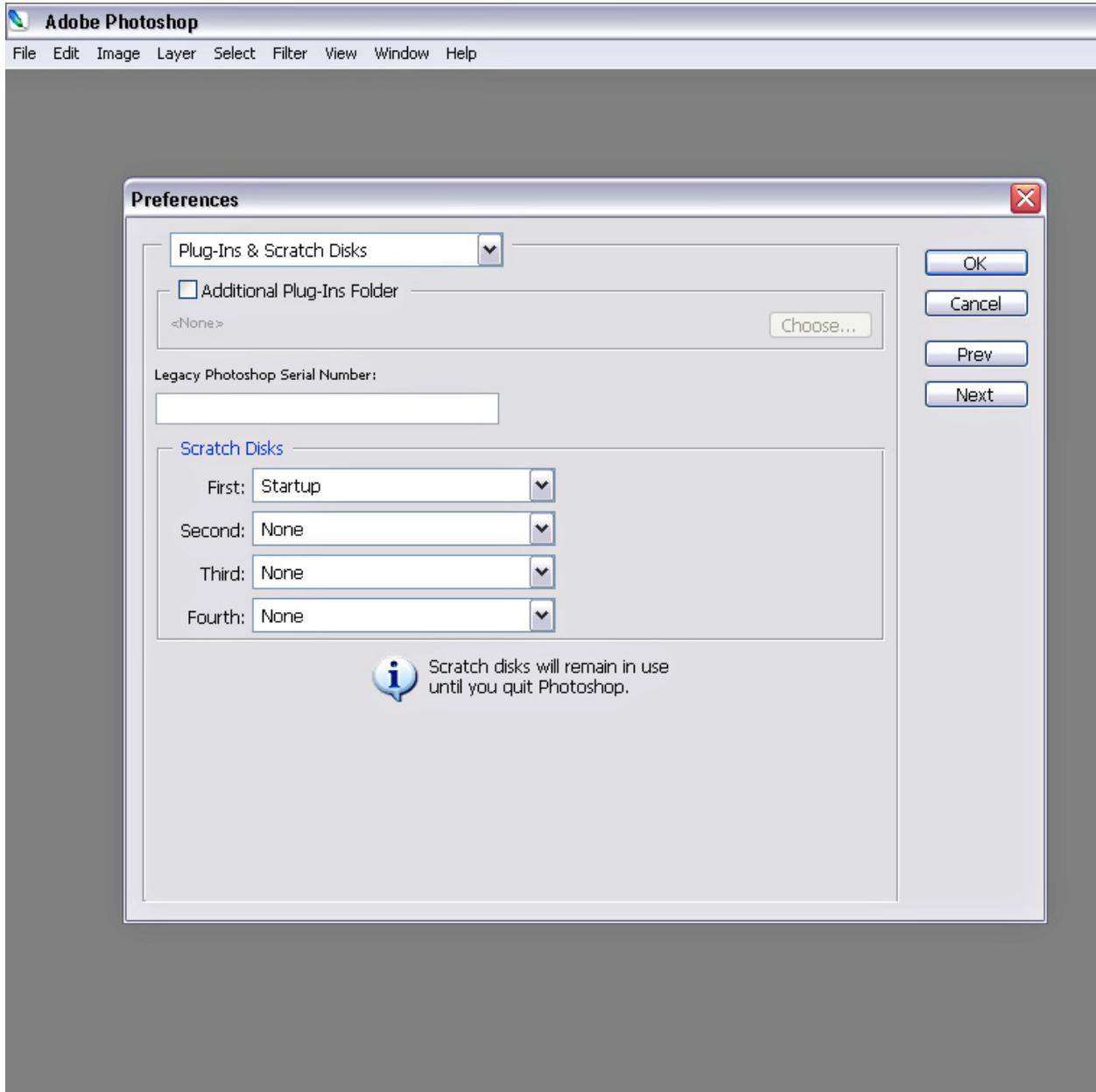
**Note:** This process will not auto-register the “\*.orf” file extension as a recognized file format in Adobe Photoshop software. In order to open or import a file in RAW format, you will need to use the import tool found under the **File | Import** menu, as shown below:



If the **Olympus Raw File** entry does not appear in the **Import** submenu, check to see if the **Plug-Ins** folder is stored in a non-default path. The path is shown on the plug-ins & scratch disks preferences window, which is accessed by selecting **Edit | Preferences | Plug-ins & Scratch Disks**.



On the Preferences dialog, note whether the **Additional Plug-Ins Folder** checkbox is checked. If so, a non-default file path will be specified. Write down the path to the Plug-Ins folder.



Close Adobe Photoshop, copy the **ORFImport.8ba** file to the specified folder, and then re-launch the application. You should then be able to import the Olympus RAW file format.