

Updating Olympus Digital Camera Firmware via OLYMPUS Master[®] 2

Overview

Olympus digital cameras are controlled by internal software called “firmware.” Firmware dictates the functionality of the products and the features that are available. Some digital cameras have the flexibility to change or add functionality by downloading and applying firmware updates. This process is governed by the Olympus software bundled with each camera.

This article explains how to update Olympus digital camera firmware using OLYMPUS Master 2.

Caution

Be advised that if the firmware update is performed improperly the camera may need to be serviced to have it returned to an operational state. Click [here](#) for information on sending Olympus digital cameras to an Olympus Service Center.

A camera’s firmware cannot be returned to an earlier version once it has been updated.

Preparing to Update the Firmware

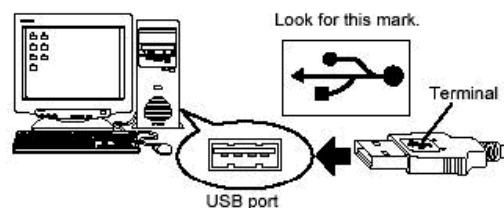
Before updating the firmware of your Olympus digital camera, do the following:

1. Log on to your computer using an account with Administrator privileges.
2. Connect the computer to the Internet. Olympus recommends using a hard-wired connection, if available, to limit the risk of service interruption during the firmware update. A wireless connection may also be used.
3. Make sure the camera has sufficient power to complete the operation. Use freshly charged batteries or the optional AC adapter. (Adapter not available for all models.)
4. Remove the memory card from the digital camera.

Downloading and Applying the Firmware

To update the camera’s firmware using the OLYMPUS Master 2 software, do the following:

1. Connect the digital camera to your computer using its bundled USB cable.

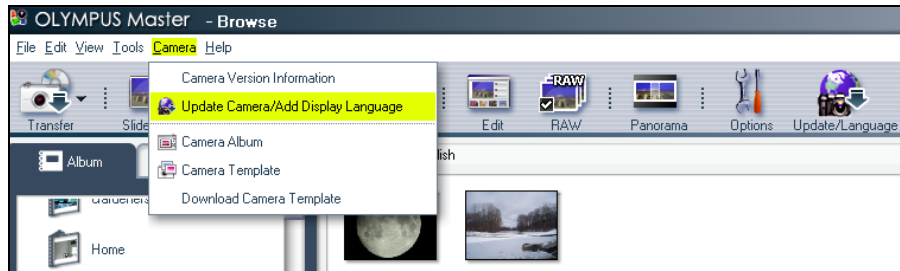


If the camera does not immediately power on, turn the camera power on.

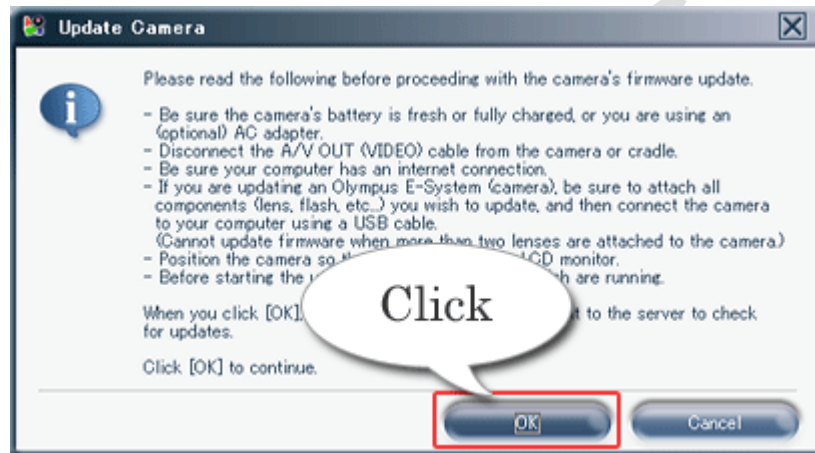
Your camera may display a selection menu on the LCD.¹ By default, the USB Connection mode for transferring images to the camera will already be selected. (Depending on the model, this may be either **STORAGE** or **PC**. If you do not know which mode to use, refer to the camera’s instruction manual.) Press the camera’s **[OK]** button to continue.

Do not press any other buttons on the digital camera, turn off the camera, or disconnect the USB cable from the camera during the firmware update.

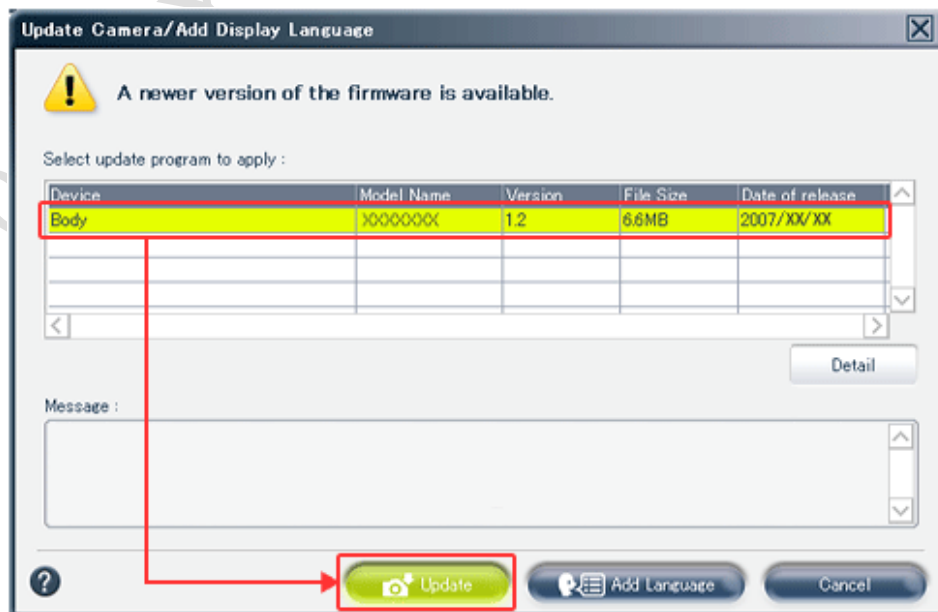
- From the **[Camera]** menu in the **[Browse]** window, select **[Update Camera / Add Display Language]**. (Optionally, click the **[Update/Language]** icon on the toolbar.)



- Follow the on-screen instructions to access the Olympus server. Once connected to the server, the **[Update Camera]** dialog will be displayed. Click the **[OK]** button.

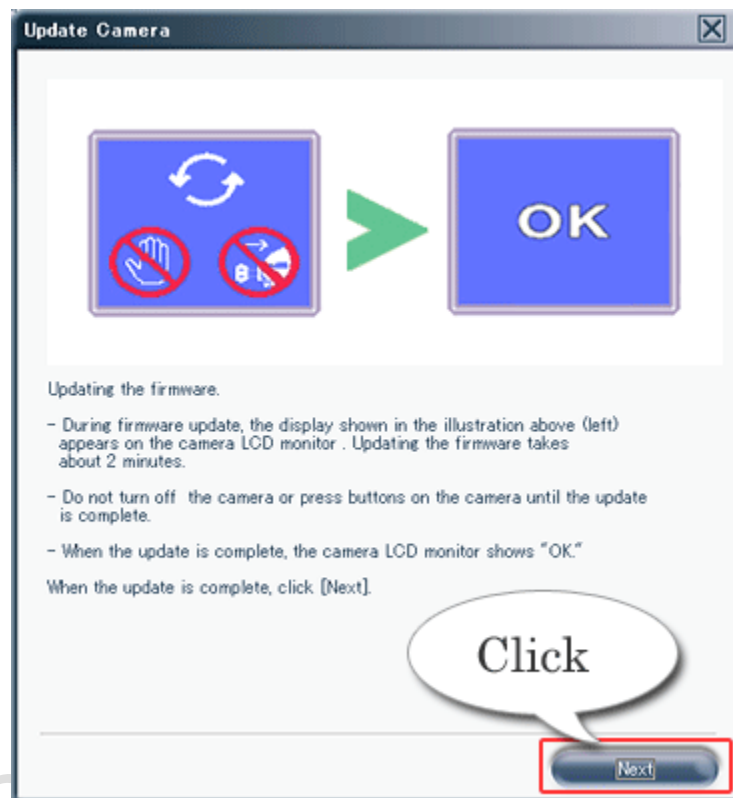


- If newer firmware versions are available, they will be displayed in a dialog box. Select the firmware to be applied, and then click the **[Update]** button.



TIP: To check the contents of an update before downloading it, select the firmware to apply, and then click **[Detail]**. The firmware details will be displayed in a new browser window.

5. When the license agreement is displayed, read the license agreement, and click **[Agree]**. The selected firmware is downloaded and transferred to the digital camera. Then, the digital camera performs the update. Do not power off the camera or press any of its buttons and do not disconnect the USB cable from the camera during the update.
6. When the digital camera's LCD displays **[OK]**, as shown on the right in the dialog box below, the firmware update is complete. Click **[Next]**.



7. Disconnect the USB cable from the camera and computer.

Note:

¹ Most Olympus digital cameras automatically detect and set the correct USB Connection mode to use when they are connected to a device (such as a camera or printer) via their bundled USB cables. Some models, including E-System DSLR cameras, have the ability to change the USB Connection setting via a menu that may be called **USB Mode** or **PC Mode**. The default value is **AUTO**. In this mode, the camera will display a selection menu after it is connected to a computer. However, if the setting is changed, the menu may not be displayed. For example, when the mode is set to **STORAGE**, the connection will be made immediately; no selection is required. When the mode is set to anything other than **AUTO** or **STORAGE**, the LCD screen will be dark and files cannot be transferred to the computer. In this case, safely disconnect the camera, set the mode to **AUTO** or **STORAGE**, and then repeat the operation.