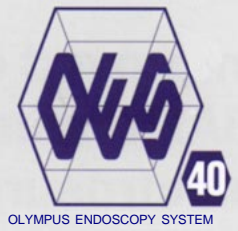


OLYMPUS®

Olympus is about life. About photographic innovations that capture precious moments of life. About advanced medical technology that saves lives. About information- and industry-related products that make possible a better living. About adding to the richness and quality of life for everyone, Olympus. Quality products with a **FOCUS ON LIFE**



NEW

OES BRONCHOFIBERSCOPE OLYMPUS BF TYPE XT40



Improved ease of use combined with more efficient BAL testing. The first bronchofiberscope with electrosurgical capability



With the increase of the incidence of respiratory diseases came the need for expanded bronchoscopic treatment capabilities. To meet this demand, OLYMPUS has continued its research and development of bronchofiberscopes, always responding to the requests of the bronchoscopist. The BF-40 series fulfills needs comprehensively with improved operability, increased BAL efficiency and enhanced cleanability. Both the diagnostic and therapeutic competence of this remarkable new instrument have been expanded, all based on the superior optical performance of the BF-30 series. This new series is compatible with electrosurgical accessories. The BF-40 series encompasses a new level of sophistication in fiberoptic bronchoscopy.

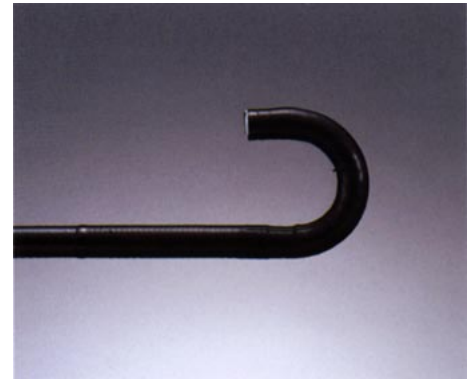
The control section with the perfect fit

The control section now incorporated a smooth ergonomic design that fits your hand perfectly, regardless of size, reducing fatigue and chance of slippage during the procedure.



Wider field of view, smaller diameter and greater tip bending range...all for easier operation

The field of view is now a wide 120° for an expanded view. Insertability is easier than ever thanks to the smallest insertion tube and distal end diameters possible, while maneuverability has been improved with the 180°UP and 130°DOWN tip bending capabilities. This combination provides excellent operability even for patients with small airways.



Easy BAL procedure with syringe

Improved suction and biopsy valves are standard accessories for the BF-40 series. With these, BAL can easily be performed with a syringe without removing the suction valve from the scope. This significantly improves test efficiency by reducing time and eliminating wasted valves.



Reduction of chance of cross-infection

Accessories such as the biopsy valve, suction valve, channel cleaning brush and suction cleaning adapter are either disposable or autoclavable for reduction of cross infection possibility.



Specially Designed for Therapeutic Applications

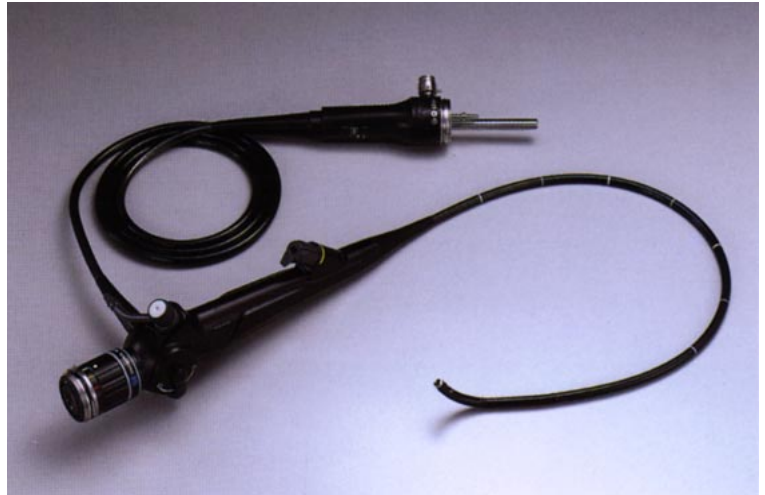
Large 3.2-mm channel enhances therapeutic capability

The BF-XT40 is ideal for therapeutic applications, the BF-XT40 features a wide 3.2-mm channel that allows you to suction fumes from cauterization or coagulation or inject an anesthetic while simultaneously manipulating an Endo-Therapy accessory. Smooth instrument insertion is facilitated by the use of a new material in the channel lining. Angulation control has also been made easier, helping to reduce fatigue. Add to that an advanced new insulation design which makes the BF-XT40 compatible with electrosurgery, and you have a sophisticated, versatile scope that greatly expands the range of intrabronchial therapeutic alternatives. Other features of this cutting-edge scope include high-resolution images, a more comfortable control section, and autoclavable accessories.



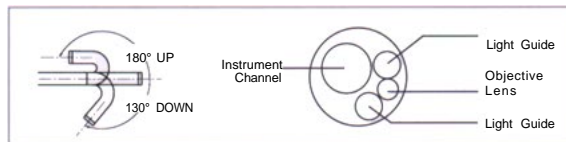
CD-6C-1 (Standard Accessory)

OLYMPUS BF TYPE XT40



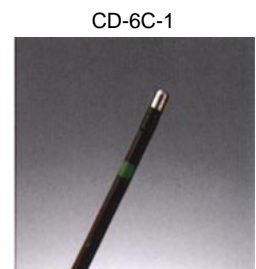
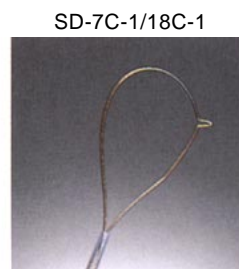
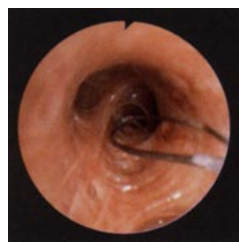
Specifications

| | | |
|--------------------|-------------------------------|--------------------|
| Optical System | Field of view | 120° |
| | Depth of Field | 3-50mm |
| Insertion Tube | Distal End Outer Diameter | ø 6.1mm |
| | Insertion Tube Outer Diameter | ø 6.2mm |
| | Working Length | 550mm |
| Instrument Channel | Channel Inner Diameter | ø 3.2mm |
| | Minimum Visible Distance | 5mm |
| Bending Section | Angulation Range | UP 180°, DOWN 130° |
| Total Length | | 840mm |



Electrosurgery through a flexible bronchoscope is now a reality

Olympus now makes electrosurgical treatment through a flexible bronchoscope possible. The BF-40 series bronchofiberscopes are the first to offer electrical insulation for operator safety. This provides a welcome alternative to laser treatment with less generation of smoke during the procedure and significantly lower investment.



Olympus business areas



Medical and
health-care
area



Imaging and
information
area



Industrial
applications
area

OLYMPUS®

FOCUS ON LIFE

OLYMPUS OPTICAL CO., LTD
San-Ei Building, 22-2, Nishi Shinjuku 1-chome, Shinjuku-ku, Tokyo, Japan

OLYMPUS OPTICAL CO. (EUROPA) GMBH.
Postfach 10 49 08, 20034 Hamburg, Wendenstrasse 14-16, 20097 Hamburg, Germany

OLYMPUS AMERICA INC.
2 Corporate Center Drive, Melville, N.Y. 11747-3157, U.S.A.

OLYMPUS KEYMED
Keymed House, Stock Road, Southend-on-Sea, Essex SS2 5QH, England

OLYMPUS SINGAPORE PTE LTD.
491B River Valley Road #12-01/04, Valley Point Office Tower, Singapore 248373

OLYMPUS BEIJING REPRESENTATIVE OFFICE
Room No. 3406 Beijing Jing Guang Centre, Hu Jia Lou, Chao Yang Qu, Beijing, China

OLYMPUS MOSCOW CORPORATION
117071, Moscow, Malaya Kaluzhskaya 19, bld. 1, fl.2, Russia

OLYMPUS AUSTRALIA PTY. LTD.
1/104 Ferntree Gully Road, Oakleigh, VIC 3166, Australia