

OLYMPUS®



EVIS EXERA GASTROINTESTINAL VIDEOSCOPE
OLYMPUS GIF TYPE XP160

SUPER-SLIM INSERTION TUBE

With its ultra-narrow 5.9 mm diameter insertion tube, this SlimSIGHT™ scope is easier to insert into the upper digestive tract while its convenient distal-end irrigation nozzle ensures clear images

SlimSIGHT™



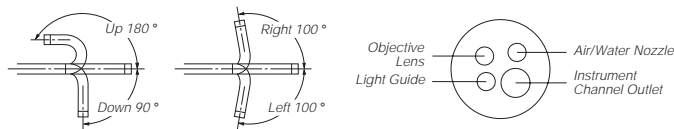
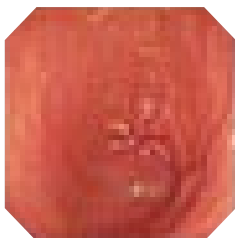
Proven Features for Powerful Performance

- Extra-narrow insertion tube measuring a mere 5.9 mm across.
- Ultra-slim design ideal for patients with strictures and narrow pharynges or esophagi, as well as for routine examinations.
- Continuously clear view ensured by distal-end irrigation nozzle that washes away any material that adheres to the lens during examination.
- 2.0 mm diameter channel incorporated for suctioning and biopsies.
- 120° field of view and 4-way angulation (180° up, 90° down and 100° right/left) enable complete examination of the upper digestive tract.
- Ergonomically designed grip enhances scope maneuverability while redesigned easy-to-access knobs and user-selectable switches improve operability.
- Superior image quality is delivered even in the expanded full height mode when combined with the dedicated CV-160 video system center.
- Scope ID function stores individual scope information and displays it on the monitor to facilitate endoscopy suite management.

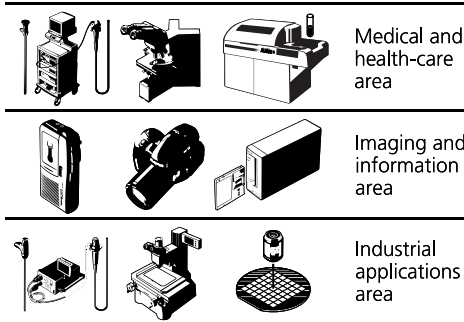


Specifications

Optical System	Field of view	120°
	Direction of view	0° Forward viewing
	Depth of field	3 to 100 mm
Distal End	Outer diameter	5.9 mm
	Insertion Tube	Outer diameter
Bending Section	Angulation range	Up 180°, Down 90°, Right 100°, Left 100°
Working Length		1030 mm
Total Length		1345 mm
Instrument Channel	Inner diameter	2 mm
	Minimum visible distance	3 mm from the distal end
	Endo-Therapy accessory entrance/exit position in field of view	



Olympus business areas



OLYMPUS
FOCUS ON LIFE

<http://www.olympus.com>

OLYMPUS OPTICAL CO., LTD.
San-Ei Building, 22-2, Nishi Shinjuku 1-chome, Shinjuku-ku, Tokyo, Japan
OLYMPUS OPTICAL CO. (EUROPA) GMBH.
Postfach 10 49 08, 20034 Hamburg / Wendenstrasse 14-16, 20097 Hamburg, Germany
OLYMPUS AMERICA INC.
2 Corporate Center Drive, Melville, N.Y. 11747-3157, U.S.A.
OLYMPUS KEYMED
Keymed House, Stock Road, Southend-on-Sea, Essex SS2 5QH, England
OLYMPUS SINGAPORE PTE LTD.
491B River Valley Road #12-01/04 Valley Point Office Tower, Singapore 248373
OLYMPUS BEIJING REPRESENTATIVE OFFICE
Rm. 818, South Tower, Beijing Kerry Centre, No.1 Guanghua Road, Chaoyang District, Beijing, 100020, China
OLYMPUS MOSCOW LIMITED LIABILITY COMPANY
117071, Moscow, Malaya Kaluzhskaya 19, bld. 1, fl.2, Russia
OLYMPUS AUSTRALIA PTY. LTD.
1/104 Ferntree Gully Road, Oakleigh, VIC 3166, Australia