

OLYMPUS[®]

Your Vision, Our Future

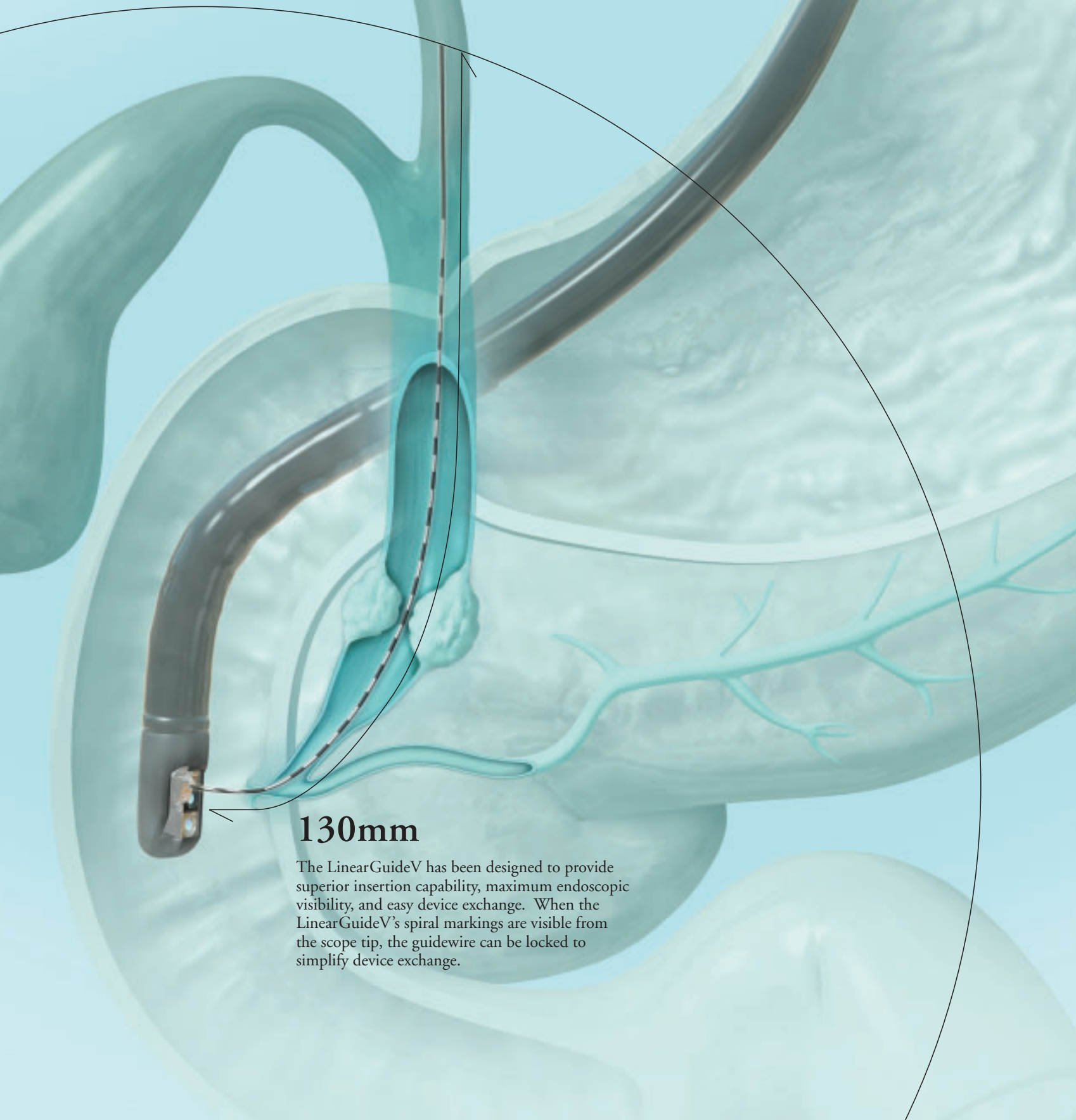
OLYMPUS
Endo**Therapy**
BEYOND THE SCOPE

DISPOSABLE GUIDEWIRE

LinearGuide^V



An Essential Tool to achieve a New Level of Efficiency in Biliary-Pancreatic Procedures. Designed to Enhance the Revolutionary Exchange Capability of the V-System.

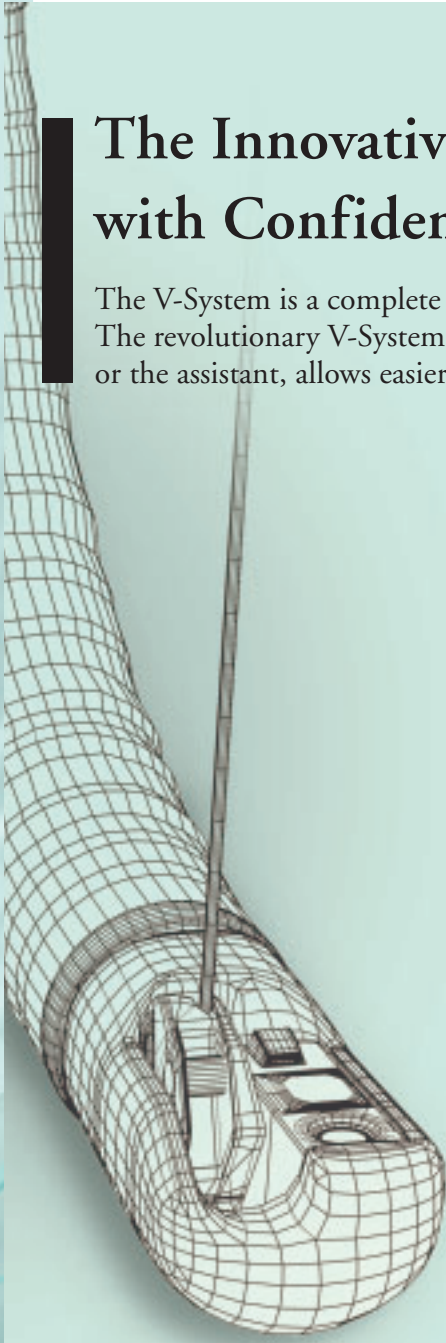


130mm

The LinearGuideV has been designed to provide superior insertion capability, maximum endoscopic visibility, and easy device exchange. When the LinearGuideV's spiral markings are visible from the scope tip, the guidewire can be locked to simplify device exchange.

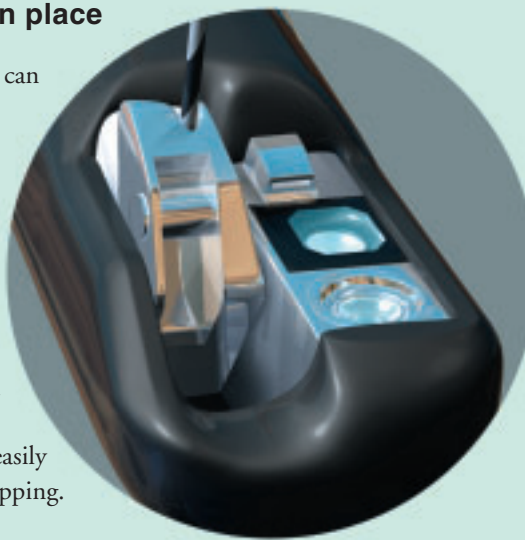
The Innovative V-System Design Lets You Proceed with Confidence and Efficiency

The V-System is a complete system that integrates Olympus endoscopes and EndoTherapy devices. The revolutionary V-System design offers the option of guidewire manipulation by the physician or the assistant, allows easier exchange of catheters, and enhances cannulation capability.

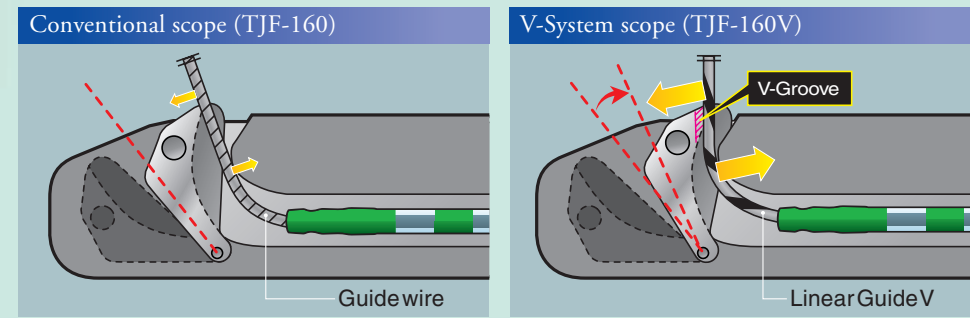


The V-Groove in the V-Scope forces elevator locks LinearGuideV in place

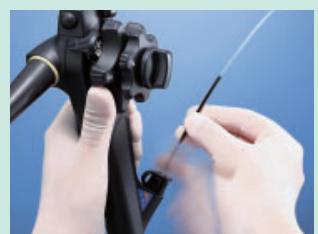
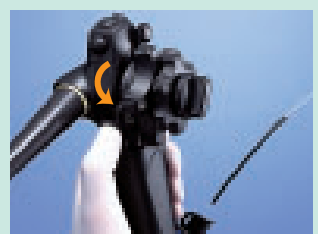


When a guidewire slips out of position, it can be extremely frustrating. With the new Linear GuideV, unwanted movement is a thing of the past. Olympus' V-System scopes feature a revolutionary V-Groove in the V-Scope forceps elevator that allows LinearGuideV to be securely locked in place without any special attachment when extended 130mm from the distal end of the scope. The approach to the bile or pancreatic ducts via the papilla can be accomplished quickly and easily without worrying about the guidewire slipping.



Schematic of the V-Groove locking mechanism



V-System device replacement procedure

| | | | |
|--|--|--|---|
| <p><i>Confirm the position of the V-Marking on the V-System EndoTherapy accessory.</i></p>  | <p><i>When the V-Marking is completely visible above the instrument channel port, lift the forceps elevator to lock the guidewire.</i></p>  | <p><i>The guidewire is now locked into the V-Groove.</i></p>  | <p><i>Completely remove the device.</i></p>  |
|--|--|--|---|

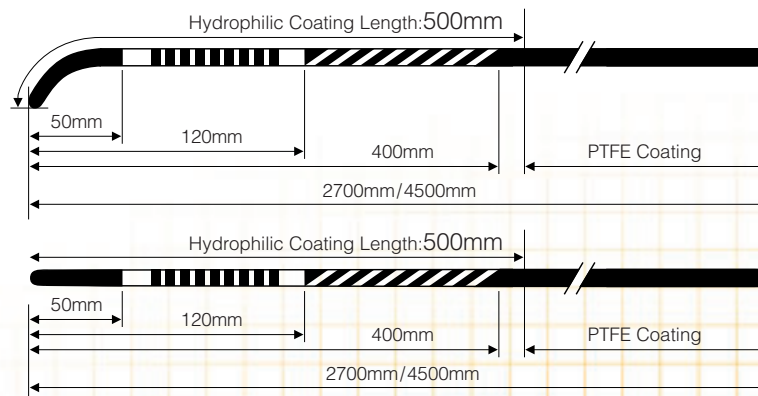
An Essential Tool to achieve a New Level of Efficiency in Biliary-Pancreatic Procedures. Designed to Enhance the Revolutionary Exchange Capability of the V-System.

All Designs are Optimized to Assure Smooth, Efficient Guidance of Devices to the Bile And Pancreatic Ducts



Two-step markers ensure visibility in the endoscopic field of view

Two-step markers on the LinearGuideV make it easy to confirm the movement and position of the guidewire within the endoscopic field of view.

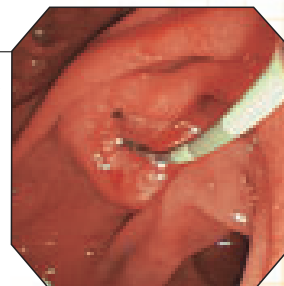


Two distal tip configurations to suit different techniques and preferences

The LinearGuideV comes in two tip configurations — straight and angulated. The straight tip can be used for a variety of purposes, while the angulated tip is best suited for passing a stricture and for selective insertion. Choose the tip that best suits your techniques and preferences.

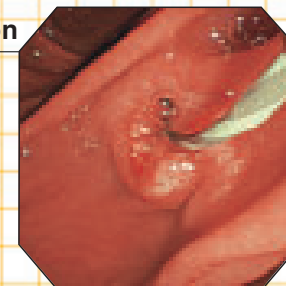
Ring-marker section

Ring-markers are visible from 50mm to 120mm from the distal end to help determine duct penetration.



Spiral-marker section

Endoscopic visibility of the spiral markers indicates that LinearGuideV may be locked in the V-Groove.



Specially coated to insure smooth wire manipulation

To ensure smooth passage through tight strictures in the bile duct, the distal 500mm from the tip is coated with a special hydrophilic coating that provides exceptional lubricity. The balance of the guidewire is coated with PTFE for smoother exchange. These coatings allow the guidewire to be manipulated easily

130mm

The LinearGuideV has been designed to provide superior insertion capability, maximum endoscopic visibility, and easy device exchange. When the LinearGuideV's spiral markings are visible from the scope tip, the guidewire can be locked to simplify device exchange.

Note:
This instrument meets the recognized standard for high frequency electrosurgical leakage current - ANSI/AAMI HF-18(1993), 4.2.5.2 and 5.2.5.2 - when used with an Olympus sphincterotome. Removal of the guidewire is not necessary during sphincterotomy.

Specifications

| Model | Outer diameter | Working length | Shape of distal portion | Hydrophilic coating length |
|--------------|----------------|----------------|-------------------------|----------------------------|
| G-V210-3527S | 0.89mm(0.035") | 2,700mm | Straight | 500mm |
| G-V210-3527A | | | Angulated | |
| G-V210-3545S | | 4,500mm | Straight | |
| G-V210-3545A | | | Angulated | |

Specifications, design and accessories are subject to change without any notice or obligation on the part of the manufacturer.

OLYMPUS[®]

OLYMPUS CORPORATION
Shinjuku Monolith, 3-1 Nishi-Shinjuku 2-chome, Shinjuku-ku, Tokyo 163-0914, Japan
OLYMPUS EUROPA GMBH
Postfach 10 49 08, 20034 Hamburg / Wendenstrasse 14-18, 20097 Hamburg, Germany
OLYMPUS AMERICA INC.
2 Corporate Center Drive, Melville, N.Y. 11747-3157, U.S.A.
OLYMPUS LATIN AMERICA, INC.
6100 Blue Lagoon Drive, Suite 390 Miami, Florida 33126-2087, U.S.A
KEYMED LTD.
Keymed House, Stock Road, Southend-on-Sea, Essex SS2 5QH, England

OLYMPUS SINGAPORE PTE LTD.
491B River Valley Road #12-01/04, Valley Point Office Tower, Singapore 248373
OLYMPUS HONG KONG AND CHINA LIMITED
Room 1520-1527, Ocean Centre, 5 Canton Road, Tsimshatsui, Kowloon, Hong Kong
OLYMPUS BEIJING REPRESENTATIVE OFFICE
Room 1401, East Tower, Gong Yuan No6 Royal Palace, No6 Gong Yuan Xie, JianGuoMen Nei, DongCheng District, Beijing, 100005, China
OLYMPUS MOSCOW LIMITED LIABILITY COMPANY
117071, Moscow, Malaya Kaluzhskaya 19, bld. 1, fl.2, Russia
OLYMPUS AUSTRALIA PTY LTD.
31 Gilby Road, Mount Waverley, VIC., 3149, Australia

www.olympus.com

Printed in Japan F1080SB-3-0804