

OLYMPUS[®]

Your Vision, Our Future

EVIS EXERA II BRONCHOVIDEOSCOPE

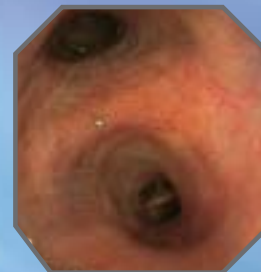
OLYMPUS BF TYPE 1T180

EVIS
EXERA II



*Take advantage of a wide variety of
endo-therapy accessories and
powerful suction capability*

EVIS EXERA II BRONCHOVIDEOSCOPE
OLYMPUS BF TYPE 1T180




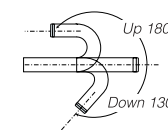
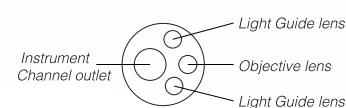
Main Features

- Wide 3.0 mm diameter channel can accommodate a 3.0 mm diameter endo-therapy accessory and provides powerful suction performance even when a device is passed through.
- Insertion tube and distal end diameters both measure 6.0 mm.
- Compatible only with Olympus electrosurgical devices.
- Fully compatible with the Olympus CV-160 and CV-140 video processors.
- Scope ID function stores individual scope information and displays it on the monitor to help facilitate management in pulmonary labs and operating rooms.



Specifications

Optical System	Field of view	120°
	Direction of view	0° (Forward viewing)
	Depth of field	3 ~ 100 mm
Insertion Tube	Distal end outer diameter	6.0 mm
	Insertion tube outer diameter	6.0 mm
	Working length	600 mm
Instrument Channel	Channel inner diameter	3.0 mm
	Minimum visible distance	3 mm from distal end
	Endo therapy accessory entrance/exit position in field of view	
	Angulation range	UP 180°, DOWN 130°
High Frequency Compatibility		YES (Compatible only with Olympus devices)
Total Length		870 mm



Specifications, design and accessories are subject to change without any notice or obligation on the part of the manufacturer.

OLYMPUS

www.olympus.com

OLYMPUS MEDICAL SYSTEMS CORP.
 Shinjuku Monolith, 3-1 Nishi-Shinjuku 2-chome, Shinjuku-ku, Tokyo 163-0914, Japan
OLYMPUS MEDICAL SYSTEMS EUROPA GMBH
 Postfach 10 49 08, 20034 Hamburg / Wardenstrasse 14-18, 20097 Hamburg, Germany
OLYMPUS AMERICA INC.
 2 Corporate Center Drive, Melville, N.Y. 11747-3157, U.S.A.
OLYMPUS SURGICAL & INDUSTRIAL AMERICA INC.
 One Corporate Drive, Orangeburg, New York 10962, U.S.A.
OLYMPUS LATIN AMERICA, INC.
 6100 Blue Lagoon Drive, Suite 390 Miami, Florida 33126-2087, U.S.A.
KEYMED LTD.
 Keymed House, Stock Road, Southend-on-Sea, Essex SS2 5QH, England

OLYMPUS SINGAPORE PTE LTD.
 491B River Valley Road #12-01/04, Valley Point Office Tower, Singapore 248373
OLYMPUS HONG KONG AND CHINA LIMITED
 Room 1520-1527, Ocean Centre, 5 Canton Road, Tsimshatsui, Kowloon, Hong Kong
OLYMPUS (BEIJING) SALES & SERVICE CO., LTD.
 Room, 1202, NCI Tower, A12 Jianguomenwai Avenue Chaoyang District Beijing, 100022, China
OLYMPUS MOSCOW LIMITED LIABILITY COMPANY
 117071, Moscow, Malaya Kaluzhskaya 19, bld. 1, fl.2, Russia
OLYMPUS AUSTRALIA PTY LTD
 31 Gilby Road, Mount Waverley, VIC., 3149, Australia